

# GP LETTER

## GP ADHD Shared Care Program: A Child & Adolescent Mental Health Services (CAMHS) initiative in partnership with GPEX Shared Care (previously GP Partners Australia)

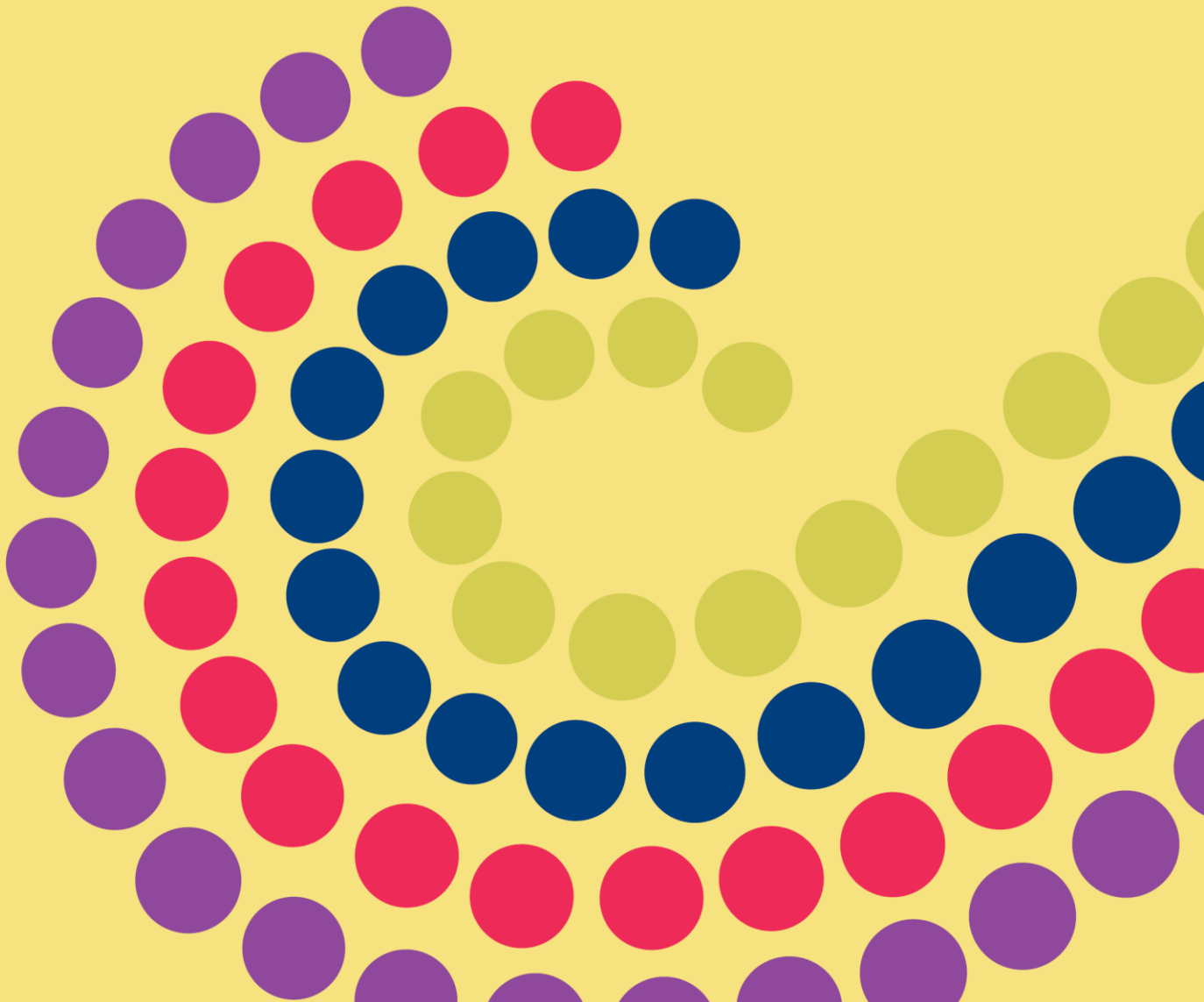
**Version 4: Paediatrician  
Endorsed Clinical Director CAMHS, Unit Head General Medicine October 2024**



[https://creativecommons.org/licenses](https://creativecommons.org/licenses/by-nc-nd/4.0/)

© Department for Health and Wellbeing,  
Government of South Australia. All rights reserved.

If the collaborator wishes to reproduce documents or submit a publication this shall be subject to the WCHN's prior written consent. In addition, if used in a publication or training WCHN is to be acknowledged.



## GP Introductory Letter

GP ADHD Shared Care Program:  
A Child & Adolescent Mental Health Services (CAMHS) initiative  
in partnership with GPEX Shared Care (previously GP Partners  
Australia)

To the General Practitioner,

When a young person diagnosed with ADHD is transitioning to adult care, and their condition is stable, Child and Adolescent Mental Health Services (CAMHS) is now able to facilitate the option of GP ADHD Shared Care for these patients. The GP ADHD Shared Care Program is modelled on the highly successful South Australian Statewide GP Obstetric Shared Care Program managed by GPEX Shared Care on behalf of SA Health.

Your patient's Specialist Paediatrician has advised that this young person is stable on their medication and is now eligible for transfer to the GP ADHD Shared Care Program, in partnership with a CAMHS psychiatrist to provide the first transition psychiatry visit.

The GP ADHD Shared Care Program supports the GP to apply for authority to take over the ongoing management of their patient's medication, in ongoing partnership with their treating specialist. Your patient has been advised to make an appointment to see you to discuss this option further, and to access the full details of the program (including consent forms) at <https://gpex.com.au/for-health-professionals/gp-shared-care/gp-adhd-shared-care/>

There is no obligation for the patient's regular GP to take on this role. In the event the regular GP determines it is not suitable for them to take on this role, the GP ADHD Shared Care Program Manager will provide the patient with the details of another GP who can take on this aspect of the patient's care, ensuring close collaboration with the patient's regular GP.

Our team have developed supporting documentation to assist GP's in managing psychostimulant medication in the community, available at the above website, with further information available here: [Drugs of dependence | SA Health](#)

We welcome any questions or concerns and for more information please do not hesitate to contact us.

Kind regards,

Ms. Leanne March,  
GP Shared Care Programs Manager  
Registered Midwife  
GP Partners Australia  
E: [leanne.march@gpex.com.au](mailto:leanne.march@gpex.com.au)

Dr Michaela Baulderstone  
General Practice Liaison Consultant  
Child & Adolescent Mental Health Services  
(CAMHS)  
E: [CAMHSResources@sa.gov.au](mailto:CAMHSResources@sa.gov.au)

